

DC MOLD SILENT 25

4.7sq.X1 (120sq.X25)



SCUDM series

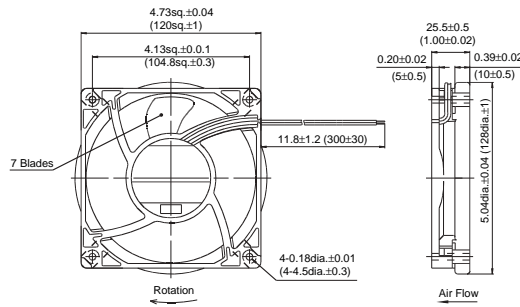
Silent Fan



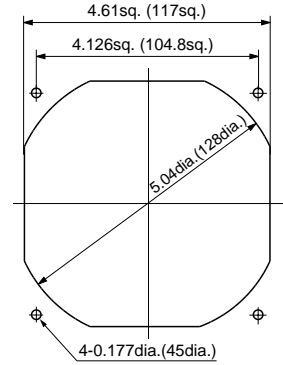
Leads specification : UL 1007 AWG24

DIMENSIONS : inch (mm)

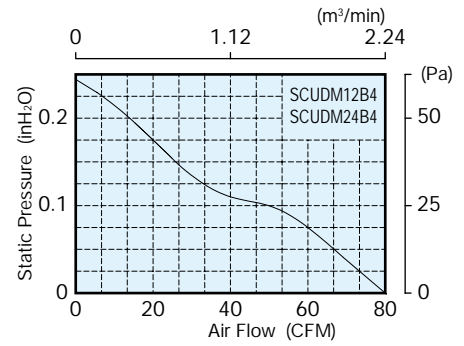
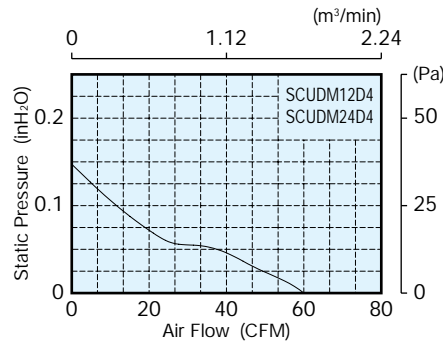
- Lead wire type (weight : 175g (0.4lb))



- Hole Cutting Size. (For reference) (outlet only)



AIR PERFORMANCE



SPECIFICATION

Max. air flow		Max. static pressure			Noise	Speed	Input	Voltage		Current	Model code	Operating temperature	
m ³ /min	CFM	Pa	mmH ₂ O	inH ₂ O				dB(A)	r/min			W	V
2.4	85	57	5.8	0.23	40	2650	4.5	12	7.2 - 13.8	380	SCUDM12B4	-20 ~ +60	-4 ~ +140
								24	12 - 27.6	200	SCUDM24B4		
1.7	60	33	3.4	0.13	31	1950	2	12	8.4 - 13.8	170	SCUDM12D4		
								24	14.4 - 27.6	90	SCUDM24D4		