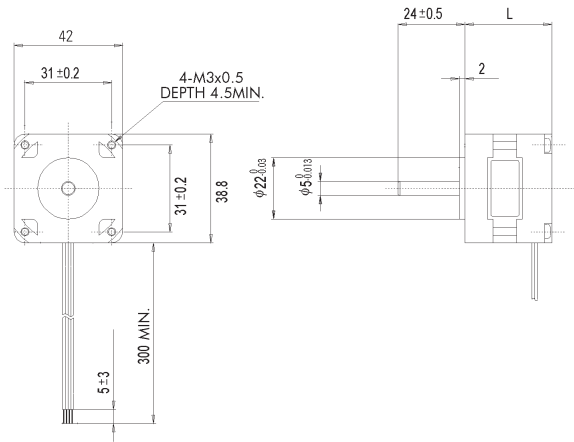
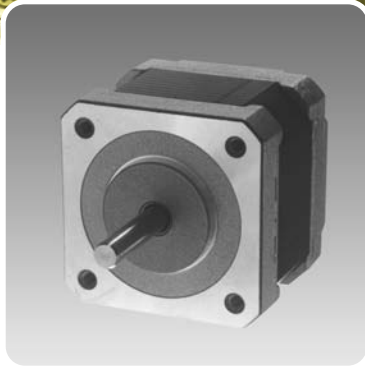


6 Lead Wire  
31mm, 38mm  
44.5mm, 49.5mmL  
1.8° step



## Specifications

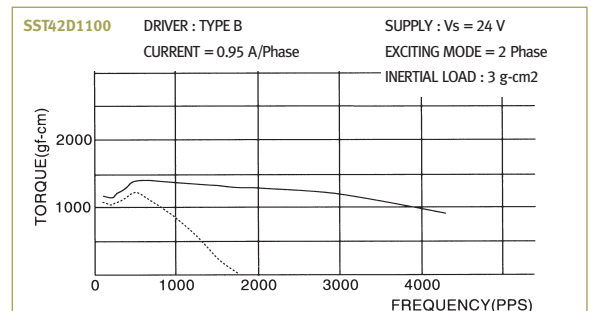
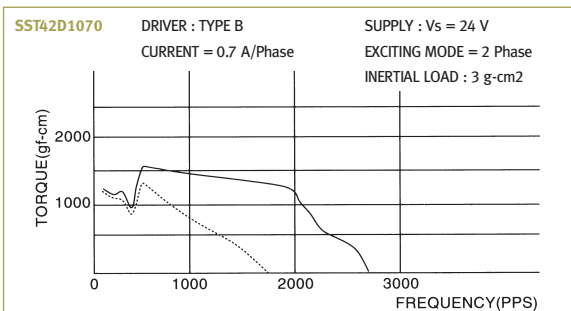
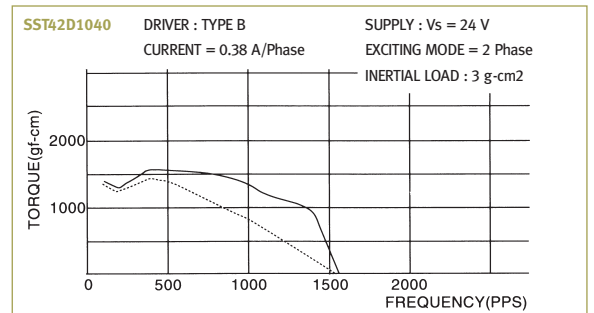
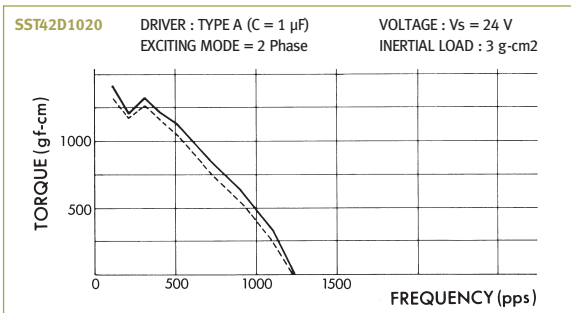
MODEL		STEP ANGLE	VOLTAGE	CURRENT	RESISTANCE	INDUCTANCE	HOLDING TORQUE	ROTOR INERTIA	NUMBER OF LEADS	WEIGHT	DIMENSION
SINGLE SHAFT	DOUBLE SHAFT	DEG.	V	A/Phase	Ω/Phase	mH/Phase	kg-cm	g-cm <sup>2</sup>	LEAD	kg	L
SST42D1100	SST42D1101	1.8	3.7	0.95	3.9	3.6	1.9	27	6	0.18	31
SST42D1070	SST42D1071	1.8	5.3	0.7	7.6	6.8	1.9	27	6	0.18	31
SST42D1040	SST42D1041	1.8	10.5	0.35	30	21.7	1.7	27	6	0.18	31
SST42D1020	SST42D1021	1.8	16.5	0.22	75	53.0	1.7	27	6	0.18	31
SST42D2120	SST42D2121	1.8	3.7	1.2	3.1	4.2	3.2	48	6	0.27	38
SST42D2090	SST42D2091	1.8	5.1	0.9	5.7	6.8	3.2	48	6	0.27	38
SST42D2070	SST42D2071	1.8	6.7	0.7	9.5	11.8	3.2	48	6	0.27	38
SST42D2040	SST42D2041	1.8	12.0	0.4	30	34.3	3.2	48	6	0.27	38
SST42D2030	SST42D2031	1.8	18.8	0.25	75	72.8	3.0	48	6	0.27	38

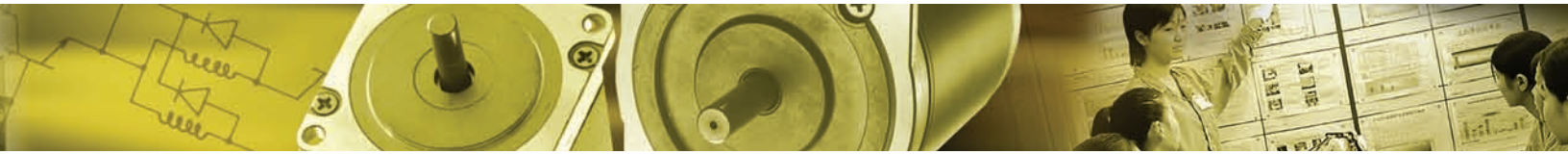
RoHS compliant

## Typical Performance (Uni-polar wiring)

Refer to page 41 for Driver Information

— Pull Out - - - Pull In





**6 Lead Wire**  
**31mm, 38mm L**  
**1.8° step**

